

# Halifax County Board of Commissioners

Vernon J. Bryant, Chairman  
J. Rives Manning, Jr., Vice-Chairman  
Carolyn C. Johnson  
Linda A. Brewer  
Marcelle O. Smith  
T. Patrick W. Qualls



Tony N. Brown  
County Manager  
Andrea H. Wiggins  
Clerk to the Board  
M. Glynn Rollins, Jr.  
County Attorney

## Monday October 15, 2018 Regular Meeting 5:30 PM

Halifax County Historic Courthouse  
10 North King Street, Post Office Box 38, Halifax, North Carolina 27839  
252-583-1131/Fax: 252-583-9921  
[www.halifaxnc.com](http://www.halifaxnc.com)

---

**The mission of the Halifax County Board of Commissioners is to provide leadership and support for an effective county government that seeks to enhance the quality of life for the people of Halifax County.**

---

### Call to Order

**Chairman Vernon J. Bryant**

### Invocation and Pledge of Allegiance

### Adoption of the Agenda

### Conflict of Interest

**Chairman Vernon J. Bryant**

*In accordance with the Halifax County Board of Commissioners Rules of Procedures and N. C. G. S. Sec.153A-44, it is the duty of every member present to vote on all matters coming before the Board, unless there is a conflict of interest as determined by the Board or by law. Does any Board member have any known conflict of interest with respect to any matters coming before the Board today? If so, please identify the conflict and the remaining Board members will vote to consider the requested excuse.*

### 1. Agenda Items

- |  |  |
|--|--|
| A. Reentry Initiative Program  | <b>Victor Hinnant, North Carolina<br/>Department of Commerce Division of<br/>Workforce Solutions</b> |
| B. Ash Monofill Capital Project Budget Ordinance Amendment   | <b>Greg Griffin, Public Utilities Director</b>   |
| C. Construction and Demolition Landfill Capital Project Budget Ordinance                               | <b>Greg Griffin, Public Utilities Director</b>   |
| D. Ash Monofill Final Cover and Construction and Demolition Final Cover and New Construction Bid Award | <b>Greg Griffin, Public Utilities Director</b>   |

### 2. Other Business

**County Commissioners**

- |  |                                   |
|--|-----------------------------------|
| A. Resolution Honoring Centenarian Easter Milton Pearson Johnson | <b>Vernon J. Bryant, Chairman</b> |
| B. Pearlie B. Bellamy Special Recognition                        | <b>Vernon J. Bryant, Chairman</b> |

### 3. Closed Session

**County Commissioners**

### 4. Adjourn

\*\*\*

*Accommodations for individuals with disabilities may be arranged by contacting the County Manager's office at 252-583-1131 at least 48 hours prior to the meeting.*

\*\*\*



**AGENDA**  
**Halifax County Board of Commissioners**  
**Regular Meeting**

**TO:** Halifax County Board of Commissioners

**FROM:** Victor Hinnant, North Carolina Department of Commerce Division of Workforce Solutions

**PRESENTER:** Victor Hinnant, North Carolina Department of Commerce Division of Workforce Solutions

**SUBJECT:** Reentry Initiative Program

**DATE:** October 15, 2018 Regular Meeting

---

**SUPPORTING INFORMATION:**

A brief presentation will be held regarding the Reentry Initiative Program. Please see attachments for additional information.

**ATTACHMENTS:**

Description

- ▢ Victor Hinnant - Letter of Request
- ▢ Local Reentry Council Structure 21ST

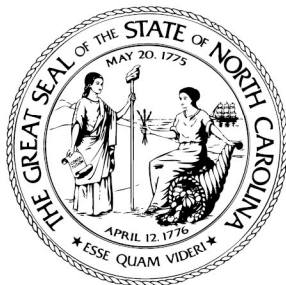
---

**TOTAL COST:**

**COUNTY COST:**

---

**REQUEST:**



ROY COOPER  
Governor

ANTHONY M. COPELAND  
Secretary

DANIEL L. GIDDENS  
Assistant Secretary

Dear Sir and Madam:

*Every person has dignity and potential. But one in four American adults has a criminal record, which limits their access to education, jobs, housing, and other things they need to reach that potential.*

***I am formally requesting the opportunity to present the need to have a strong reentry council in Halifax County on the October agenda.***

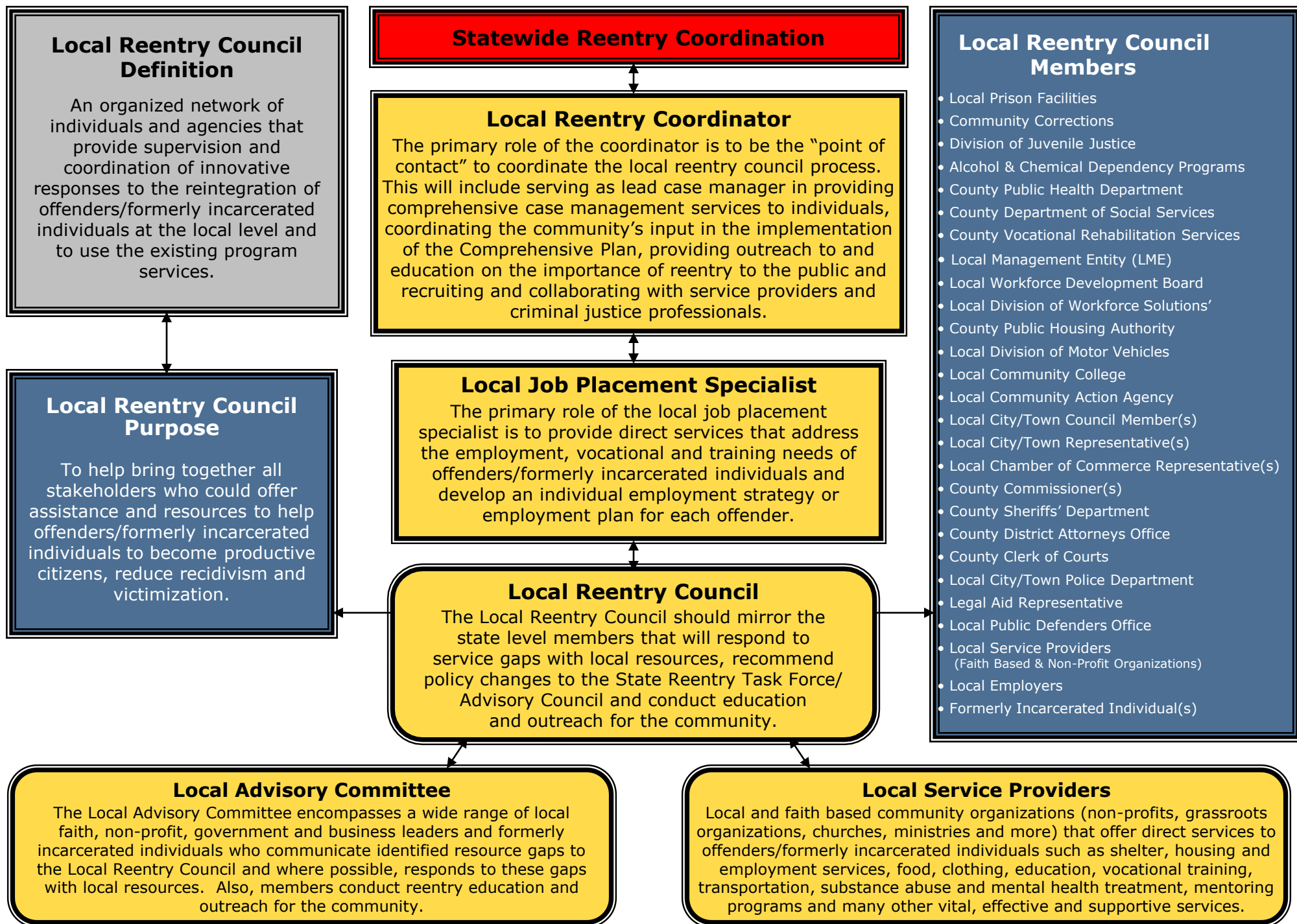
The North Carolina Department of Commerce in partnership with the Reentry Initiative Program assist communities with forming reentry round-table interest groups. **We create community resources.** The state's reentry professionals found this to be necessary to support returning citizens who were encountering barriers. We have begun in Halifax and Northampton counties organizing leadership in partnership with **North Carolina Department of Public Safety** to push this initiative forward in your community and other communities throughout the state. I assist the communities in my region of 29 counties with this effort as well as training staff at the NC Department of Workforce Development offices. I would like to discuss the benefits we have to offer to employers and returning citizens to help foster a productive relationship. I will also share with you information on **Federal Bonding and Tax Credits** to assist employers with placing this population safely and productively in their perspective hometowns.

Thank you for your attention in this matter.  
Please see attached for more detail

**Victor Hinnant,  
Regional Reentry Specialist  
North Carolina Department of Commerce Division of Workforce Solutions  
3101 Bismarck Street  
Greenville, NC 27834  
(O) (252) 355-9067  
(F) (252) 355-9076**

**© 919 607-0645**

# NORTH CAROLINA LOCAL REENTRY COUNCIL STRUCTURE





**AGENDA**  
**Halifax County Board of Commissioners**  
**Regular Meeting**

**TO:** Halifax County Board of Commissioners

**FROM:** Greg Griffin, Public Utilities Director

**PRESENTER:** Greg Griffin, Public Utilities Director

**SUBJECT:** Ash Monofill Capital Project Budget Ordinance Amendment

**DATE:** October 15, 2018 Regular Meeting

---

**SUPPORTING INFORMATION:**

- The Ash Monofill Final Cover Capital Project Ordinance was approved by the Board of Commissioners June 4th, 2018
- Bids for the project were opened September 19th, 2018 and the lowest responsive, responsible bid is \$186,919 more than the budget approved in the existing Capital Project Ordinance.
- If approved, the attached amendment to the Capital Project Ordinance would increase the construction line \$178,000 and increase the contingency line \$8,919
- Through a signed Agreement with Westmoreland Coal Company, the project cost for this Capital Project will be reimbursed by Westmoreland Coal Company

**ATTACHMENTS:**

Description

- ▢ Proposed Amendment
- ▢ Ash Monofill Capital Project Ordinance as approved 6/4/18
- ▢ Ash Monofill Final Cover Cost Reimbursement Agreement w/ Westmoreland

---

<b>TOTAL</b>	<b>COUNTY COST:</b>
<b>COST:</b> \$2,714,919	\$2,714,919 to be reimbursed by Westmoreland Coal Company

---

**REQUEST:** Halifax County Public Utilities requests the Board of Commissioners vote to approve the Amendment to the Ash Monofill Final Cover Project Ordinance increasing the project budget by \$186,919

**AMENDMENT 1  
ASH MONOFILL FINAL COVER  
CAPITAL PROJECT ORDINANCE**

Whereas, the Ash Monofill Final Cover Capital Project Ordinance was approved by the Halifax County Board of Commissioners June 4, 2018, and

Whereas, construction bids were received for The Project September 19, 2018, and

Whereas, the lowest responsive, responsible bid is more than the amount authorized in the Ash Monofill Final Cover Capital Project Ordinance

Amendment 1 increases the project budget construction line \$178,000 and increases the contingency line \$8,919.

The project budget authorized by Amendment 1 is:

Construction	\$2,378,000
Technical & Construction Administration	\$218,000
Contingency	<u>\$118,919</u>
Total	\$2,714,919

Adopted this \_\_\_\_\_ day of October, 2018 at Halifax, North Carolina.

---

Vernon J. Bryant (Signature of Chairman)

Attest:

---

Andrea H. Wiggins (Signature of Clerk to the Board)

**HALIFAX COUNTY  
ASH MONOFILL FINAL COVER  
CAPITAL PROJECT ORDINANCE**

BE IT ORDAINED by the Board of Commissioners of Halifax County, North Carolina, that, pursuant to Section 13.2 of Chapter 159 of the General Statutes of North Carolina, the following capital project ordinance is hereby adopted:

Section 1. The project authorized is the construction of a the Final Cover on the Coal Ash Disposal Site owned and operated by Halifax County at 921 Liles Rd. Littleton, NC.

Section 2. The officers of Halifax County are hereby directed to proceed with the capital project according to the budget contained herein.

Section 3. The following amounts are appropriated for the project:

Construction	\$2,200,000
Technical & Construction Administration	\$218,000
Contingency	\$110,000
	<hr/>
	\$2,528,000

Section 4. The following revenues are anticipated to be available to complete this project:

Halifax County Solid Waste Fund Balance	\$2,528,000
---	-------------

Section 5. The Finance Officer is hereby directed to maintain within the capital project fund sufficient specific detailed accounting records to satisfy the requirements of state regulations.

Section 6. Funds may be advanced from the General Fund for the purpose of making payments as due.

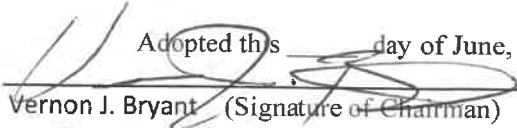
Section 7. The Finance Officer is directed to report, on a quarterly basis, on the financial status of each project element in Section 3.

Section 8. The Budget Officer is directed to include a detailed analysis of past and future costs and revenues on this capital project in every budget submission made to this Board.

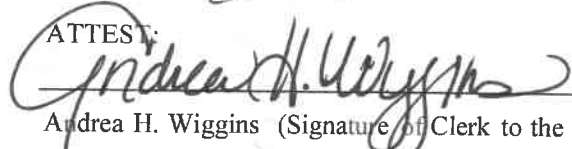
Section 9. The Finance Officer may move funds between expenditure line items, including contingency, to cover shortages in any expenditure line items and report such changes to the County Board of Commissioners at their next meeting.

Section 10. Copies of this capital project ordinance shall be furnished to the Clerk to the Board, the Budget Officer and the Finance Officer for direction in carrying out this project.

Adopted this \_\_\_\_\_ day of June, 2018 at Halifax, North Carolina.

  
Vernon J. Bryant (Signature of Chairman)

ATTEST:

  
Andrea H. Wiggins (Signature of Clerk to the Board)



SUPPLEMENTAL AGREEMENT  
TO ASH DISPOSAL SERVICES AGREEMENT  
AND PERTAINING TO THE "ASH MONOFILL FINAL COVER PROJECT"

THIS SUPPLEMENTAL AGREEMENT is made and entered into effective as of the 6th day of June, 2018, by and between WESTMORELAND-LG&E PARTNERS, a Virginia general partnership ("Westmoreland") and HALIFAX COUNTY, a body politic and corporate under the laws of the State of North Carolina ("Halifax"), and supplements that certain Ash Disposal Services Agreement dated March 4, 1991, by and between Westmoreland-Hadson Partners (now Westmoreland-LG&E Partners) and Halifax, as amended by Amendment No. 1 to Ash Disposal Agreement dated as of September 25, 1991, as amended by Amendment No. 2 to Ash Disposal Agreement dated as of December 1, 1993, and as amended by Amendment No. 3 to Ash Disposal Services Agreement dated June 1, 2015 (as so amended, the Agreement);

WITNESSETH:

WHEREAS, Halifax now has two Ash Monofill Cells (designated as cells No. 1 and No. 2) at its landfill facility located at 921 Liles Road, Littleton, North Carolina, which has served the ash disposal needs of Westmoreland under the Agreement; and

WHEREAS, Westmoreland has notified Halifax that it has no further need for ash disposal services as contemplated under the Agreement; and

WHEREAS, Halifax desires to permanently close these Ash Monofill Cells; and

WHEREAS, pursuant to Section 6 of the Agreement, Westmoreland is required to make reimbursement to Halifax for the cost associated with the closure and post-closure care of the Ash Monofill Cells, including costs related to the installation of a final cover system, post closure monitoring, maintenance and repair of the Ash Monofill Cells; and

WHEREAS, Subsections 6(b)(i) and (ii) of the Agreement generally set forth the procedures for the documentation and timely reimbursement of cost related to the closing of Ash Monofill Cells; and

WHEREAS, prior to Halifax going out for bids for work related to the permanent closure of the Ash Monofill Cells, the parties desire to clarify the procedures for documentation and reimbursement;

NOW, THEREFORE, in consideration of the premises and the mutual covenants and obligations set forth below, and notwithstanding any provisions in Subsections 6(b)(i) and (ii) of the Agreement which may be to the contrary, Westmoreland and Halifax agree as follows:

1. Description of the Project. This Supplemental Agreement relates to the permanent closing of Ash Monofill Cell No. 1 and Ash Monofill Cell No. 2, hereinafter referenced as the "Ash Monofill Final Cover Project" or the "Project".
2. Design/Engineering Services. Halifax will employ the Smith Gardner, Inc., for design, bidding, construction administration and construction quality assurance (CQA) services associated with the Project. Consistent with Subsection 6(b)(i) of the Agreement, it is acknowledged that upon completion of the Project, Smith Gardner will provide certification for the benefit of both Halifax and Westmoreland that the Ash Monofill Cells have been closed in accordance with all applicable federal, state and local laws, standards, permits and regulations.
3. Public Bidding Laws Apply. Halifax will bid the work for the Project in accordance with North Carolina public bidding statutes, which require the award of a contract to the lowest responsive, responsible bidder. A copy of the bids will be provided to Westmoreland. Although Westmoreland is invited to comment on the bids, Westmoreland will have no authority to require Halifax to accept or reject any bid.

4. Direct Payment for Work by Halifax. Halifax will make payment for all work related to the Project from its own funds, including design, bid and construction administration work, all within time frames set forth in its contracts for the work.

5. Reimbursement by Westmoreland. Halifax will invoice Westmoreland on a monthly basis for reimbursement of all work paid for by Halifax, including design, bidding, construction administration and construction quality assurance (CQA) services associated with the Project. The monthly invoice to Westmoreland shall include all invoices or pay requests paid by Halifax and the documentation supporting those invoices and pay requests. It is understood that Halifax will not make payment on any contractor invoice or pay request that is not approved for payment by Smith Gardner.

6. Timeliness of Reimbursement; Dispute Resolution; Jurisdiction; Venue. Consistent with Subsection 6(b)(ii) of the Agreement, Westmoreland will make reimbursement or give notice of exceptions within 30 calendar days of receipt of invoice from Halifax. If the parties are unable to resolve any dispute related to reimbursement, such dispute may be settled by mediation in the State of North Carolina in accord with such procedures as may be available to units of local government under state law. No other dispute resolution procedures shall apply. Jurisdiction for any legal proceedings concerning the Agreement, including this Supplemental Agreement, shall be state courts in the State of North Carolina. Venue for such proceedings shall be Halifax County.

7. Other Terms Unchanged. All the terms and conditions of the Agreement which are not inconsistent with the provisions of this Supplemental Agreement shall remain in full force and effect. In the event that a conflict arises between the Agreement and this Supplemental

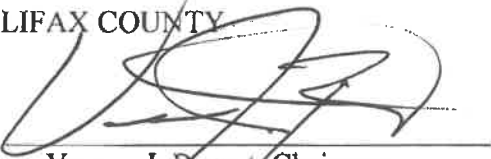
Agreement, this Supplemental Agreement shall prevail, but the respective documents shall be interpreted to be in harmony with each other where possible.

8. Entire Agreement. This Supplemental Agreement and the Agreement embody the whole agreement and understanding of the parties hereto with respect to the transactions contemplated by the Agreement and supersede and nullify all prior agreements, arrangements and understandings related to the subject matter hereof and of the Agreement.

IN WITNESS WHEREOF, Westmoreland LG&E Partners and Halifax County have caused this Supplemental Agreement to be executed by their respective duly authorized officers effective as of the date first written above.

HALIFAX COUNTY

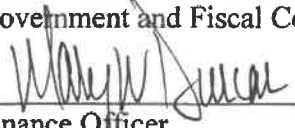
By:

  
Vernon J. Bryant, Chairman  
Halifax County Board of Commissioners

Attest:

  
Clerk to the Halifax County Board of Commissioners

This instrument has been pre-audited  
in the Manner Required by the Local  
Government and Fiscal Control Act.

  
Finance Officer

Approved as to Form and Legality

  
County Attorney

WESTMORELAND PARTNERS  
(f/k/a Westmoreland-Hadson Partners and  
Westmoreland-LG&E Partners), a  
Virginia General Partnership, with authority by  
Westmoreland Energy LLC and WEI Roanoke Valley, Inc.

By:

  
Jennifer S. Grafton  
Director of General Partnership



**AGENDA**  
**Halifax County Board of Commissioners**  
**Regular Meeting**

**TO:** Halifax County Board of Commissioners

**FROM:** Greg Griffin, Public Utilities Director

**PRESENTER:** Greg Griffin, Public Utilities Director

**SUBJECT:** Construction and Demolition Landfill Capital Project Budget Ordinance

**DATE:** October 15, 2018 Regular Meeting

---

**SUPPORTING INFORMATION:**

- The existing Construction and Demolition (C&D) Landfill is near permitted capacity.
- Public Utilities is required to construct an approved Final Cover over the existing C&D Landfill.
- NCDEQ has approved a new C&D Disposal Site in the borrow area where the soil will be removed to construct the Final Cover on the existing C&D Landfill.
- The proposed Construction and Demolition Landfill Capital Project Budget Ordinance will allow funding of a project to include installation of the Final Cover on the existing C&D Landfill and construction of the new Construction and Demolition Disposal Area

**ATTACHMENTS:**

Description

- ▢ C&D Capital Project Ordinance

---

**TOTAL COST:**\$787,483

**COUNTY COST:**\$787,483

---

**REQUEST:** Public Utilities requests the Board of Commissioners approve the Construction and Demolition Landfill Capital Project Budget Ordinance to construct the Final Cover on the existing Construction and Demolition Landfill and construct a new Construction and Demolition disposal site.

**HALIFAX COUNTY  
CONSTRUCTION & DEMOLITION  
LANDFILL CAPITAL PROJECT  
ORDINANCE**

BE IT ORDAINED by the Board of Commissioners of Halifax County, North Carolina, that, pursuant to Section 13.2 of Chapter 159 of the General Statutes of North Carolina, the following capital project ordinance is hereby adopted:

Section 1. The project authorized is the construction of a the Final Cover on the existing C&D Disposal Site owned and operated by Halifax County at 921 Liles Rd. Littleton, NC., and the construction of a new C&D Disposal Site.

Section 2. The officers of Halifax County are hereby directed to proceed with the capital project according to the budget contained herein.

Section 3. The following amounts are appropriated for the project:

Construction	\$592,841
Technical & Construction Administration	\$115,000
Contingency	\$29,642
	<hr/>
	\$787,483

Section 4. The following revenues are anticipated to be available to complete this project:

Halifax County Solid Waste Fund Balance	\$787,483
---	-----------

Section 5. The Finance Officer is hereby directed to maintain within the capital project fund sufficient specific detailed accounting records to satisfy the requirements of state regulations.

Section 6. Funds may be advanced from the General Fund for the purpose of making payments as due.

Section 7. The Finance Officer is directed to report, on a quarterly basis, on the financial status of each project element in Section 3.

Section 8. The Budget Officer is directed to include a detailed analysis of past and future costs and revenues on this capital project in every budget submission made to this Board.

Section 9. The Finance Officer may move funds between expenditure line items, including contingency, to cover shortages in any expenditure line items and report such changes to the County Board of Commissioners at their next meeting.

Section 10. Copies of this capital project ordinance shall be furnished to the Clerk to the Board, the Budget Officer and the Finance Officer for direction in carrying out this project.

Adopted this \_\_\_\_\_ day of October, 2018 at Halifax, North Carolina.

---

Vernon J. Bryant (Signature of Chairman)

---

Attest: Andrea H. Wiggins, Clerk to the Board



**AGENDA**  
**Halifax County Board of Commissioners**  
**Regular Meeting**

**TO:** Halifax County Board of Commissioners

**FROM:** Greg Griffin, Public Utilities Director

**PRESENTER:** Greg Griffin, Public Utilities Director

**SUBJECT:** • Ash Monofill Final Cover and Construction and Demolition Final Cover and New Construction Bid Award

**DATE:** October 15, 2018 Regular Meeting

---

**SUPPORTING INFORMATION:**

- Construction of Final Cover systems composed of soil and geo-membrane liners are required for the Ash Monofill and the existing Construction and Demolition Disposal Landfill.
- A new Construction and Demolition Disposal Site has been approved in the area where soil will be removed to construct the Final Cover for the existing Construction and Demolition Disposal Landfill.
- Bids were opened September 19, 2018 for construction of the Ash Monofill and Construction and Demolition Disposal Final Cover construction projects.
- These projects were bid together and completion of the Construction and Demolition Disposal Final Cover Project will create a new Construction and Demolition Disposal area.
- The lowest responsive, responsible bidder is Glover Construction Company, Inc. at \$2,971,221. Of this amount, \$2,378,380 will be reimbursed by Westmoreland Coal Company.

**ATTACHMENTS:**

Description

- ▣ Engineer's Recommendation and Bid Tabulation

---

<b>TOTAL</b>	<b>COUNTY COST:</b>
<b>COST:</b> \$2,971,221	\$2,971,221 (\$2,378,380 to be reimbursed by Westmoreland)

---

**REQUEST:** Public Utilities requests the Board of Commissioners award the Bid for Construction of the Ash Monofill and Construction and Demolition Landfill Final Cover Projects to Glover Construction Co., Inc. for their bid amount of \$2,971,221.





September 24, 2018

Mr. Greg Griffin  
Director  
Halifax County Public Utilities  
26 N. King Street  
Halifax, NC 27839  
[griffing@halifaxnc.com](mailto:griffing@halifaxnc.com)

**RE: Halifax County Landfill Facility  
Ash Monofill and Area 1 C&D Landfill Closures  
Certified Bid Tabulation & Recommendation for Contractor Selection**

Dear Greg:

Smith Gardner, Inc. (S+G) is pleased to present you with the results of the bidding for the Ash Monofill Closure and Area 1 Construction and Demolition Debris (C&D) Landfill Closure project, which bid on September 19, 2018 at 3:00 p.m. The results of the bid are as follows below. There were no bid alternates. Per instructions provided to bidders, the low bidder was determined by using the total of Base Bid Schedules A and B.

BIDDER	TOTAL BASE BID PRICE (SCHEDULES A & B)	
Glover Construction Co., Inc.	1.	\$2,971,221.00
D.H. Griffin Infrastructure, LLC	2.	\$3,024,632.00
Shamrock Environmental Corp.	3.	\$3,394,933.30
Sargent Corporation	4.	\$3,469,290.00
Thalle Construction Co., Inc.	5.	\$3,695,820.00
Rifenburg Construction, Inc.	6.	\$3,764,425.00
T&K Construction, LLC	7.	\$3,771,720.24
M.J. Price Construction Co., Inc.	8.	\$4,675,350.00
Rightmyer Machine Rentals, Inc.	9.	\$4,899,562.00

Based on the bid results, Glover Construction Co., Inc. (Glover) is the clear low bidder. Glover's Base Bid was also slightly below the \$3,012,152 to \$3,313,367 range predicted in our opinion of probable construction cost dated September 17, 2018 (sent via email).

Based upon the information provided by Glover with their bid, S+G finds their submittal to be complete. Further, based on our positive experience working with Glover on several past projects, we recommend that this project (Base Bid) be awarded to Glover Construction Co., Inc. of Pleasant Hill, North Carolina.

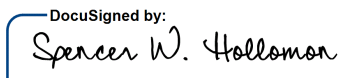
Mr. Greg Griffin  
September 24, 2018  
Page 2 of 2

S+G further recommends that an additional \$148,500 (5%) be budgeted as a contingency to account for any additional work which might be needed or any unexpected conditions which might arise during the project. Thus, our recommended construction budget is as follows:


Base Bid Price (Schedules A & B):	\$2,971,221.00
Contingency (5%):	\$ 148,500.00
<b>Total:</b>	<b>\$3,119,721.00</b>

Please find **attached** a certified tabulation of each bid received.

Sincerely,  
**SMITH GARDNER, INC.**

DocuSigned by:  
  
F54D319962B04DD...

Spencer W. Hollomon, P.E.  
Project Engineer  
[spencer@smithgardnerinc.com](mailto:spencer@smithgardnerinc.com)

DocuSigned by:  
  
5B6B31996A674D7...

Pieter K. Scheer, P.E.  
Vice President, Senior Engineer  
[pieter@smithgardnerinc.com](mailto:pieter@smithgardnerinc.com)



9/24/2018

Attachment: Certified Bid Tabulation

cc: Ed Stanfield, Halifax County

BID TABULATION				BIDDER: Glover Construction Co., Inc.		D.H. Griffin Infrastructure, LLC		Shamrock Environmental Corporation	
Halifax County Landfill Facility - Ash Monofill and Area 1 C&D Landfill Closures				ADDRESS: P.O. Box 40		4716 Hilltop Road		6106 Corporate Park Drive	
September 19, 2018, 3:00 p.m.				Pleasant Hill, NC 27866		Greensboro, NC 27407		Browns Summit, NC 27214	
NC CONTRACTOR LICENSE NO:				15019		56415		47513	
BASE BID SCHEDULE A: ASH MONOFILL CLOSURE									
PAY ITEM NUMBER	ITEM DESCRIPTION	EST. QUANTITY	UNITS	UNIT PRICE	AMOUNT	UNIT PRICE	AMOUNT	UNIT PRICE	AMOUNT
1.0	Site Preparation:	1	LS	LS	\$30,000.00	LS	\$340,000.00	LS	\$148,071.00
1.1	Abandon Piezometers Completed in Soil	35	VF	\$100.00	\$3,500.00	\$64.00	\$2,240.00	\$137.00	\$4,795.00
2.0	Excavation:	-----	-----	-----	-----	-----	-----	-----	-----
2.1	Waste Relocation	27,000	CY	LS	\$108,000.00	LS	\$125,000.00	LS	\$100,440.00
3.0	Embankment:	-----	-----	-----	-----	-----	-----	-----	-----
3.1	Intermediate Cover - Waste Relocation Areas	12,000	CY	LS	\$48,000.00	LS	\$100,000.00	LS	\$49,320.00
3.2	Structural Fill - Borrow Area No. 1	1,750	CY	LS	\$7,000.00	LS	\$8,800.00	LS	\$7,192.50
3.3	Miscellaneous Additional Embankment	3,000	CY	\$4.00	\$12,000.00	\$3.50	\$10,500.00	\$4.11	\$12,330.00
4.0	Final Cover System:	-----	-----	-----	-----	-----	-----	-----	-----
4.1	40 mil Text. LLDPE Geomembrane	925,000	SF	LS	\$878,750.00	LS	\$480,000.00	LS	\$582,750.00
4.2	Drainage Geocomposite	925,000	SF	LS	\$185,000.00	LS	\$600,000.00	LS	\$619,750.00
4.3	Drains (Drainage Geocomposite)	6,140	LF	LS	\$165,780.00	LS	\$80,000.00	LS	\$124,396.40
4.4	Cap Diversion Berm - Type 1	1,580	LF	LS	\$15,800.00	LS	\$14,000.00	LS	\$14,915.20
4.5	Cap Diversion Berm - Type 2	460	LF	LS	\$3,680.00	LS	\$5,000.00	LS	\$5,980.00
4.6	Side Slope Swales	1,460	LF	LS	\$11,680.00	LS	\$7,000.00	LS	\$13,008.60
4.7	Vegetative Soil Layer (2.0' Min.)	69,000	CY	LS	\$483,000.00	LS	\$202,000.00	LS	\$482,310.00
4.8	Down Pipes (24" CPE (Type S) Pipe & Fittings)	1,180	LF	LS	\$60,180.00	LS	\$65,000.00	LS	\$72,463.80
4.9	Precast Concrete Energy Dissipators	4	EA	\$1,500.00	\$6,000.00	\$1,100.00	\$4,400.00	\$2,615.00	\$10,460.00
5.0	Sump Riser Extension	1	LS	LS	\$7,500.00	LS	\$5,700.00	LS	\$8,549.00
6.0	Erosion and Sedimentation Control:	-----	-----	-----	-----	-----	-----	-----	-----
6.1	Temporary Gravel Construction Entrance/Exit	1	EA	\$5,000.00	\$5,000.00	\$5,700.00	\$5,700.00	\$16,177.00	\$16,177.00
6.2	Silt Fence	2,700	LF	\$3.00	\$8,100.00	\$2.50	\$6,750.00	\$2.88	\$7,776.00
6.3	Stone Filter Fence	200	LF	\$12.50	\$2,500.00	\$9.50	\$1,900.00	\$18.00	\$3,600.00
6.4	Ash Monofill Basin 1 - New Riser/Barrel Outlet Structure	1	LS	LS	\$22,050.00	LS	\$25,000.00	LS	\$23,676.00
6.5	Baffles - Ash Monofill Basin 1 and 3	1	LS	LS	\$7,600.00	LS	\$7,200.00	LS	\$3,623.00
6.6	Precast Concrete Drop Inlets (DI-11A, DI-11B, & DI-31)	3	EA	LS	\$16,500.00	LS	\$13,500.00	LS	\$14,358.00
6.7	24" Diam. RCP (Class III) (C-31) (includes 1 FES)	68	LF	\$80.00	\$5,440.00	\$82.00	\$5,576.00	\$90.00	\$6,120.00
6.8	36" Diam. RCP (Class III) (C-12)	8	LF	\$100.00	\$800.00	\$196.00	\$1,568.00	\$112.00	\$896.00
6.9	48" Diam. RCP (Class III) (C-11) (includes 1 FES)	80	LF	\$205.00	\$16,400.00	\$220.00	\$17,600.00	\$209.00	\$16,720.00
6.10	Rip Rap Aprons (C-31, Ash Basin 1, & Down Pipes (4))	6	EA	LS	\$7,500.00	LS	\$6,100.00	LS	\$13,758.00
6.11	Drainage Channel DC-11	230	LF	\$11.00	\$2,530.00	\$100.00	\$23,000.00	\$216.00	\$49,680.00
6.12	Drainage Channel DC-12	140	LF	\$11.00	\$1,540.00	\$10.00	\$1,400.00	\$7.00	\$980.00
6.13	Drainage Channel DC-13	100	LF	\$110.00	\$11,000.00	\$100.00	\$10,000.00	\$220.00	\$22,000.00
6.14	Drainage Channel DC-31	270	LF	\$10.00	\$2,700.00	\$11.00	\$2,970.00	\$8.00	\$2,160.00
6.15	Drainage Channel DC-32	370	LF	\$10.00	\$3,700.00	\$11.00	\$4,070.00	\$8.00	\$2,960.00
6.16	Erosion Control Blanket	8,000	SY	\$1.75	\$14,000.00	\$1.50	\$12,000.00	\$5.02	\$40,160.00
6.17	Revegetation	35	AC	\$2,750.00	\$96,250.00	\$2,700.00	\$94,500.00	\$2,079.00	\$72,765.00
7.0	Cleanout of Ash Monofill Internal Stormwater Basin	500	CY	\$10.00	\$5,000.00	\$20.00	\$10,000.00	\$21.00	\$10,500.00
8.0	Surveying Control	1	LS	LS	\$54,625.00	LS	\$58,000.00	LS	\$86,250.00
9.0	Bonds, Mobilization, & Insurance (4% of Total Bid Price (Schedule A)) =	1	LS	LS	\$69,275.00	LS	\$80,000.00	LS	\$62,676.00
TOTAL BASE BID PRICE - SCHEDULE A:				\$2,378,380.00		\$2,436,474.00		\$2,713,566.50	

BIDDER: Glover Construction Co., Inc.				D.H. Griffin Infrastructure, LLC				Shamrock Environmental Corporation	
BASE BID SCHEDULE B: AREA 1 C&D LANDFILL CLOSURE									
1.0	Site Preparation:	1	LS	LS	\$10,000.00	LS	\$174,000.00	LS	\$141,970.00
1.1	Abandon Piezometers Completed in Soil	382	VF	\$95.00	\$36,290.00	\$64.00	\$24,448.00	\$87.00	\$33,234.00
2.0	Excavation:	-----	-----	-----	-----	-----	-----	-----	-----
2.1	Overexcavation & Backfill - Soil	50	CY	\$10.00	\$500.00	\$10.00	\$500.00	\$3.00	\$150.00
3.0	Embankment:	-----	-----	-----	-----	-----	-----	-----	-----
3.1	Structural Fill - Borrow Area No. 2	9,900	CY	LS	\$39,600.00	LS	\$28,000.00	LS	\$30,888.00
3.2	Miscellaneous Additional Embankment	2,000	CY	\$4.00	\$8,000.00	\$3.50	\$7,000.00	\$3.35	\$6,700.00
4.0	LFG Vents	6	EA	\$2,450.00	\$14,700.00	\$1,300.00	\$7,800.00	\$1,409.00	\$8,454.00
5.0	Final Cover System (Type 1 & 2):	-----	-----	-----	-----	-----	-----	-----	-----
5.1	Cap Diversion Berm	1,160	LF	LS	\$16,240.00	LS	\$13,500.00	LS	\$6,658.40
5.2	40 mil Text. LLDPE Geomembrane	46,000	SF	LS	\$55,350.00	LS	\$25,000.00	LS	\$33,120.00
5.3	Drainage Geocomposite	46,000	SF	LS	\$11,250.00	LS	\$34,000.00	LS	\$34,500.00
5.4	Drains (Drainage Geocomposite)	1050	LF	LS	\$27,300.00	LS	\$14,000.00	LS	\$54,757.50
5.5A	Vegetative Soil Layer - Side Slopes (1.5' Avg.)	13,100	CY	LS	\$104,800.00	LS	\$35,000.00	LS	\$77,028.00
5.5B	Vegetative Soil Layer - Top Slopes (2.0' Min.)	3,800	CY	LS	\$30,400.00	LS	\$10,000.00	LS	\$25,954.00
5.6	Down Pipes DP-1 & DP-2 (18" CPE (Type S) Pipe & Fittings)	680	LF	LS	\$30,600.00	LS	\$14,500.00	LS	\$23,589.20
5.7	Down Pipe DP-3 (24" CPE (Type S) Pipe & Fittings)	160	LF	LS	\$8,320.00	LS	\$6,300.00	LS	\$9,120.00
6.0	Erosion and Sedimentation Control:	-----	-----	-----	-----	-----	-----	-----	-----
6.1	Temporary Gravel Construction Entrance/Exit	1	EA	\$5,000.00	\$5,000.00	\$6,800.00	\$6,800.00	\$8,055.00	\$8,055.00
6.2	Silt Fence	1,400	LF	\$3.00	\$4,200.00	\$2.50	\$3,500.00	\$2.88	\$4,032.00
6.3	Stone Filter Fence	100	LF	\$12.50	\$1,250.00	\$9.46	\$946.00	\$59.00	\$5,900.00
6.4	Basin A2-1	1	LS	LS	\$21,300.00	LS	\$20,000.00	LS	\$12,552.00
6.5	Rock Dam	1	LS	LS	\$15,070.00	LS	\$6,200.00	LS	\$3,648.00
6.6	Level Spreader	1	LS	LS	\$5,300.00	LS	\$990.00	LS	\$2,019.00
6.7	24" Diam. CPE (Type S) Pipe (C-A) (includes 2 FES)	96	LF	\$51.00	\$4,896.00	\$39.00	\$3,744.00	\$114.00	\$10,944.00
6.8	Filter Berm	1	EA	LS	\$2,000.00	LS	\$1,300.00	LS	\$3,088.00
6.9	Rip Rap Aprons (Down Pipes (3), Basin A2-1, C-A)	5	EA	LS	\$4,500.00	LS	\$6,800.00	LS	\$14,520.00
6.10	Drainage Channel DC-12A	280	LF	\$5.00	\$1,400.00	\$5.50	\$1,540.00	\$3.00	\$840.00
6.11	Drainage Channel DC-12B	630	LF	\$10.00	\$6,300.00	\$11.00	\$6,930.00	\$4.09	\$2,576.70
6.12	Drainage Channel DC-21	360	LF	\$10.00	\$3,600.00	\$11.00	\$3,960.00	\$8.00	\$2,880.00
6.13	Erosion Control Blanket	3000	SY	\$1.75	\$5,250.00	\$1.50	\$4,500.00	\$3.45	\$10,350.00
6.14	Revegetation	17	AC	\$2,750.00	\$46,750.00	\$2,700.00	\$45,900.00	\$2,331.00	\$39,627.00
7.0	LFG Vent Trench	250	LF	LS	\$27,500.00	LS	\$36,000.00	LS	\$29,000.00
8.0	Surveying Control	1	LS	LS	\$27,875.00	LS	\$27,000.00	LS	\$17,250.00
9.0	Bonds, Mobilization & Insurance (4% of Total Bid Price (Schedule B)) =	1	LS	LS	\$17,300.00	LS	\$18,000.00	LS	\$27,962.00
TOTAL BASE BID PRICE - SCHEDULE B:				\$592,841.00		\$588,158.00		\$681,366.80	
TOTAL BASE BID PRICE (SCHEDULES A & B):				\$2,971,221.00		\$3,024,632.00		\$3,394,933.30	
IRREGULARITIES:				NONE		NONE		NONE	

BID TABULATION				BIDDER: Sargent Corporation		Thalle Construction Co., Inc.		Rifenburg Construction, Inc.	
Halifax County Landfill Facility - Ash Monofill and Area 1 C&D Landfill Closures				ADDRESS: 378 Bennoch Rd		900 NC 86 North		440 West Barbee Street	
September 19, 2018, 3:00 p.m.				Stillwater, ME 04489		Hillsborough, NC 27278		Zebulon, NC 27597	
NC CONTRACTOR LICENSE NO:				65779		35203		37580	
BASE BID SCHEDULE A: ASH MONOFILL CLOSURE									
PAY ITEM NUMBER	ITEM DESCRIPTION	EST. QUANTITY	UNITS	UNIT PRICE	AMOUNT	UNIT PRICE	AMOUNT	UNIT PRICE	AMOUNT
1.0	Site Preparation:	1	LS	LS	\$398,000.00	LS	\$120,500.00	LS	\$300,000.00
1.1	Abandon Piezometers Completed in Soil	35	VF	\$60.00	\$2,100.00	\$80.00	\$2,800.00	\$175.00	\$6,125.00
2.0	Excavation:	-----	-----	----	----	----	----	----	----
2.1	Waste Relocation	27,000	CY	LS	\$200,000.00	LS	\$229,500.00	LS	\$150,000.00
3.0	Embankment:	-----	-----	----	----	----	----	----	----
3.1	Intermediate Cover - Waste Relocation Areas	12,000	CY	LS	\$100,000.00	LS	\$126,000.00	LS	\$50,000.00
3.2	Structural Fill - Borrow Area No. 1	1,750	CY	LS	\$15,000.00	LS	\$43,750.00	LS	\$15,000.00
3.3	Miscellaneous Additional Embankment	3,000	CY	\$4.50	\$13,500.00	\$4.00	\$12,000.00	\$5.50	\$16,500.00
4.0	Final Cover System:	-----	-----	----	----	----	----	----	----
4.1	40 mil Text. LLDPE Geomembrane	925,000	SF	LS	\$500,000.00	LS	\$527,250.00	LS	\$680,000.00
4.2	Drainage Geocomposite	925,000	SF	LS	\$600,000.00	LS	\$610,500.00	LS	\$820,000.00
4.3	Drains (Drainage Geocomposite)	6,140	LF	LS	\$100,000.00	LS	\$135,080.00	LS	\$107,000.00
4.4	Cap Diversion Berm - Type 1	1,580	LF	LS	\$25,000.00	LS	\$14,220.00	LS	\$42,000.00
4.5	Cap Diversion Berm - Type 2	460	LF	LS	\$4,000.00	LS	\$1,610.00	LS	\$2,200.00
4.6	Side Slope Swales	1,460	LF	LS	\$20,000.00	LS	\$10,220.00	LS	\$5,500.00
4.7	Vegetative Soil Layer (2.0' Min.)	69,000	CY	LS	\$400,000.00	LS	\$586,500.00	LS	\$285,000.00
4.8	Down Pipes (24" CPE (Type S) Pipe & Fittings)	1,180	LF	LS	\$50,000.00	LS	\$118,000.00	LS	\$88,000.00
4.9	Precast Concrete Energy Dissipators	4	EA	\$1,500.00	\$6,000.00	\$3,000.00	\$12,000.00	\$2,000.00	\$8,000.00
5.0	Sump Riser Extension	1	LS	LS	\$10,000.00	LS	\$3,700.00	LS	\$3,000.00
6.0	Erosion and Sedimentation Control:	-----	-----	----	----	----	----	----	----
6.1	Temporary Gravel Construction Entrance/Exit	1	EA	\$8,000.00	\$8,000.00	\$4,000.00	\$4,000.00	\$4,500.00	\$4,500.00
6.2	Silt Fence	2,700	LF	\$3.00	\$8,100.00	\$2.00	\$5,400.00	\$2.00	\$5,400.00
6.3	Stone Filter Fence	200	LF	\$8.00	\$1,600.00	\$10.00	\$2,000.00	\$11.00	\$2,200.00
6.4	Ash Monofill Basin 1 - New Riser/Barrel Outlet Structure	1	LS	LS	\$20,000.00	LS	\$25,000.00	LS	\$20,000.00
6.5	Baffles - Ash Monofill Basin 1 and 3	1	LS	LS	\$8,000.00	LS	\$6,300.00	LS	\$8,000.00
6.6	Precast Concrete Drop Inlets (DI-11A, DI-11B, & DI-31)	3	EA	LS	\$25,000.00	LS	\$18,000.00	LS	\$13,000.00
6.7	24" Diam. RCP (Class III) (C-31) (includes 1 FES)	68	LF	\$120.00	\$8,160.00	\$150.00	\$10,200.00	\$125.00	\$8,500.00
6.8	36" Diam. RCP (Class III) (C-12)	8	LF	\$240.00	\$1,920.00	\$200.00	\$1,600.00	\$200.00	\$1,600.00
6.9	48" Diam. RCP (Class III) (C-11) (includes 1 FES)	80	LF	\$350.00	\$28,000.00	\$350.00	\$28,000.00	\$225.00	\$18,000.00
6.10	Rip Rap Aprons (C-31, Ash Basin 1, & Down Pipes (4))	6	EA	LS	\$5,000.00	LS	\$27,000.00	LS	\$4,000.00
6.11	Drainage Channel DC-11	230	LF	\$120.00	\$27,600.00	\$160.00	\$36,800.00	\$115.00	\$26,450.00
6.12	Drainage Channel DC-12	140	LF	\$15.00	\$2,100.00	\$18.00	\$2,520.00	\$17.00	\$2,380.00
6.13	Drainage Channel DC-13	100	LF	\$120.00	\$12,000.00	\$100.00	\$10,000.00	\$120.00	\$12,000.00
6.14	Drainage Channel DC-31	270	LF	\$16.00	\$4,320.00	\$20.00	\$5,400.00	\$18.00	\$4,860.00
6.15	Drainage Channel DC-32	370	LF	\$18.00	\$6,660.00	\$20.00	\$7,400.00	\$16.00	\$5,920.00
6.16	Erosion Control Blanket	8,000	SY	\$1.50	\$12,000.00	\$0.80	\$6,400.00	\$2.50	\$20,000.00
6.17	Revegetation	35	AC	\$2,200.00	\$77,000.00	\$1,600.00	\$56,000.00	\$2,600.00	\$91,000.00
7.0	Cleanout of Ash Monofill Internal Stormwater Basin	500	CY	\$13.00	\$6,500.00	\$5.00	\$2,500.00	\$10.00	\$5,000.00
8.0	Surveying Control	1	LS	LS	\$30,000.00	LS	\$30,500.00	LS	\$75,000.00
9.0	Bonds, Mobilization, & Insurance (4% of Total Bid Price (Schedule A)) =	1	LS	LS	\$70,000.00	LS	\$115,000.00	LS	\$120,000.00
TOTAL BASE BID PRICE - SCHEDULE A:				\$2,805,560.00		\$2,953,650.00		\$3,026,135.00	


				BIDDER: Sargent Corporation		Thalle Construction Co., Inc.		Rifenburg Construction, Inc.	
BASE BID SCHEDULE B: AREA 1 C&D LANDFILL CLOSURE									
1.0	Site Preparation:	1	LS	LS	\$100,000.00	LS	\$80,000.00	LS	\$150,000.00
1.1	Abandon Piezometers Completed in Soil	382	VF	\$60.00	\$22,920.00	\$80.00	\$30,560.00	\$175.00	\$66,850.00
2.0	Excavation:	-----	-----	-----	-----	-----	-----	-----	-----
2.1	Overexcavation & Backfill - Soil	50	CY	\$40.00	\$2,000.00	\$20.00	\$1,000.00	\$100.00	\$5,000.00
3.0	Embankment:	-----	-----	-----	-----	-----	-----	-----	-----
3.1	Structural Fill - Borrow Area No. 2	9,900	CY	LS	\$80,000.00	LS	\$99,000.00	LS	\$30,000.00
3.2	Miscellaneous Additional Embankment	2,000	CY	\$4.50	\$9,000.00	\$4.00	\$8,000.00	\$5.50	\$11,000.00
4.0	LFG Vents	6	EA	\$1,500.00	\$9,000.00	\$860.00	\$5,160.00	\$1,600.00	\$9,600.00
5.0	Final Cover System (Type 1 & 2):	-----	-----	-----	-----	-----	-----	-----	-----
5.1	Cap Diversion Berm	1,160	LF	LS	\$12,000.00	LS	\$23,200.00	LS	\$2,100.00
5.2	40 mil Text. LLDPE Geomembrane	46,000	SF	LS	\$30,000.00	LS	\$31,740.00	LS	\$45,000.00
5.3	Drainage Geocomposite	46,000	SF	LS	\$33,000.00	LS	\$31,280.00	LS	\$57,000.00
5.4	Drains (Drainage Geocomposite)	1050	LF	LS	\$18,000.00	LS	\$21,000.00	LS	\$21,000.00
5.5A	Vegetative Soil Layer - Side Slopes (1.5' Avg.)	13,100	CY	LS	\$80,000.00	LS	\$111,350.00	LS	\$60,000.00
5.5B	Vegetative Soil Layer - Top Slopes (2.0' Min.)	3,800	CY	LS	\$25,000.00	LS	\$30,400.00	LS	\$26,000.00
5.6	Down Pipes DP-1 & DP-2 (18" CPE (Type S) Pipe & Fittings)	680	LF	LS	\$30,000.00	LS	\$40,800.00	LS	\$26,000.00
5.7	Down Pipe DP-3 (24" CPE (Type S) Pipe & Fittings)	160	LF	LS	\$10,000.00	LS	\$12,800.00	LS	\$10,000.00
6.0	Erosion and Sedimentation Control:	-----	-----	-----	-----	-----	-----	-----	-----
6.1	Temporary Gravel Construction Entrance/Exit	1	EA	\$8,000.00	\$8,000.00	\$4,000.00	\$4,000.00	\$4,500.00	\$4,500.00
6.2	Silt Fence	1,400	LF	\$3.00	\$4,200.00	\$2.00	\$2,800.00	\$2.00	\$2,800.00
6.3	Stone Filter Fence	100	LF	\$8.00	\$800.00	\$10.00	\$1,000.00	\$11.00	\$1,100.00
6.4	Basin A2-1	1	LS	LS	\$20,000.00	LS	\$20,000.00	LS	\$18,000.00
6.5	Rock Dam	1	LS	LS	\$2,000.00	LS	\$6,200.00	LS	\$4,300.00
6.6	Level Spreader	1	LS	LS	\$2,500.00	LS	\$1,000.00	LS	\$5,000.00
6.7	24" Diam. CPE (Type S) Pipe (C-A) (includes 2 FES)	96	LF	\$80.00	\$7,680.00	\$90.00	\$8,640.00	\$75.00	\$7,200.00
6.8	Filter Berm	1	EA	LS	\$3,000.00	LS	\$2,800.00	LS	\$4,000.00
6.9	Rip Rap Aprons (Down Pipes (3), Basin A2-1, C-A)	5	EA	LS	\$5,000.00	LS	\$20,000.00	LS	\$8,200.00
6.10	Drainage Channel DC-12A	280	LF	\$9.00	\$2,520.00	\$18.00	\$5,040.00	\$12.00	\$3,360.00
6.11	Drainage Channel DC-12B	630	LF	\$15.00	\$9,450.00	\$20.00	\$12,600.00	\$14.00	\$8,820.00
6.12	Drainage Channel DC-21	360	LF	\$16.00	\$5,760.00	\$20.00	\$7,200.00	\$16.00	\$5,760.00
6.13	Erosion Control Blanket	3000	SY	\$1.50	\$4,500.00	\$0.80	\$2,400.00	\$2.50	\$7,500.00
6.14	Revegetation	17	AC	\$2,200.00	\$37,400.00	\$1,600.00	\$27,200.00	\$2,600.00	\$44,200.00
7.0	LFG Vent Trench	250	LF	LS	\$40,000.00	LS	\$50,000.00	LS	\$30,000.00
8.0	Surveying Control	1	LS	LS	\$30,000.00	LS	\$20,000.00	LS	\$35,000.00
9.0	Bonds, Mobilization & Insurance (4% of Total Bid Price (Schedule B)) =	1	LS	LS	\$20,000.00	LS	\$25,000.00	LS	\$29,000.00
TOTAL BASE BID PRICE - SCHEDULE B:				\$663,730.00		\$742,170.00		\$738,290.00	
TOTAL BASE BID PRICE (SCHEDULES A & B):				\$3,469,290.00		\$3,695,820.00		\$3,764,425.00	
IRREGULARITIES:				NONE		NONE		NONE	


BID TABULATION				BIDDER: T & K Construction, LLC		M.J. Price Construction Co., Inc.		Rightmyer Machine Rentals	
Halifax County Landfill Facility - Ash Monofill and Area 1 C&D Landfill Closures				ADDRESS: 235 County Road 1242		P.O. Box 331		497 Hwy 48	
September 19, 2018, 3:00 p.m.				Vinemont, AL 35179		Roanoke Rapids, NC 27870		Roanoke Rapids, NC 27870	
NC CONTRACTOR LICENSE NO:				55999		60611		5323	
BASE BID SCHEDULE A: ASH MONOFILL CLOSURE									
PAY ITEM NUMBER	ITEM DESCRIPTION	EST. QUANTITY	UNITS	UNIT PRICE	AMOUNT	UNIT PRICE	AMOUNT	UNIT PRICE	AMOUNT
1.0	Site Preparation:	1	LS	LS	\$88,000.00	LS	\$170,000.00	LS	\$163,000.00
1.1	Abandon Piezometers Completed in Soil	35	VF	\$77.10	\$2,698.50	\$1,000.00	\$35,000.00	\$343.00	\$12,005.00
2.0	Excavation:	-----	-----	-----	-----	-----	-----	-----	-----
2.1	Waste Relocation	27,000	CY	LS	\$162,000.00	LS	\$324,000.00	LS	\$180,800.00
3.0	Embankment:	-----	-----	-----	-----	-----	-----	-----	-----
3.1	Intermediate Cover - Waste Relocation Areas	12,000	CY	LS	\$60,100.00	LS	\$144,000.00	LS	\$180,300.00
3.2	Structural Fill - Borrow Area No. 1	1,750	CY	LS	\$0.00	LS	\$21,000.00	LS	\$16,350.00
3.3	Miscellaneous Additional Embankment	3,000	CY	\$3.47	\$6,600.00	\$5.00	\$15,000.00	\$8.00	\$24,000.00
4.0	Final Cover System:	-----	-----	-----	-----	-----	-----	-----	-----
4.1	40 mil Text. LLDPE Geomembrane	925,000	SF	LS	\$695,250.00	LS	\$650,890.00	LS	\$839,000.00
4.2	Drainage Geocomposite	925,000	SF	LS	\$823,500.00	LS	\$901,300.00	LS	\$985,000.00
4.3	Drains (Drainage Geocomposite)	6,140	LF	LS	\$130,700.00	LS	\$59,400.00	LS	\$196,400.00
4.4	Cap Diversion Berm - Type 1	1,580	LF	LS	\$55,100.00	LS	\$35,750.00	LS	\$9,500.00
4.5	Cap Diversion Berm - Type 2	460	LF	LS	\$6,500.00	LS	\$12,100.00	LS	\$2,400.00
4.6	Side Slope Swales	1,460	LF	LS	\$20,800.00	LS	\$30,000.00	LS	\$11,055.00
4.7	Vegetative Soil Layer (2.0' Min.)	69,000	CY	LS	\$259,200.00	LS	\$414,000.00	LS	\$660,742.00
4.8	Down Pipes (24" CPE (Type S) Pipe & Fittings)	1,180	LF	LS	\$64,100.00	LS	\$91,500.00	LS	\$100,500.00
4.9	Precast Concrete Energy Dissipators	4	EA	\$4,025.00	\$16,100.00	\$1,500.00	\$6,600.00	\$2,280.00	\$9,120.00
5.0	Sump Riser Extension	1	LS	LS	\$13,200.00	LS	\$10,300.00	LS	\$4,000.00
6.0	Erosion and Sedimentation Control:	-----	-----	-----	-----	-----	-----	-----	-----
6.1	Temporary Gravel Construction Entrance/Exit	1	EA	\$11,610.00	\$11,610.00	\$7,500.00	\$7,500.00	\$3,050.00	\$3,050.00
6.2	Silt Fence	2,700	LF	\$5.68	\$15,336.00	\$2.85	\$8,500.00	\$4.50	\$12,150.00
6.3	Stone Filter Fence	200	LF	\$25.70	\$5,140.00	\$11.80	\$2,600.00	\$9.30	\$1,860.00
6.4	Ash Monofill Basin 1 - New Riser/Barrel Outlet Structure	1	LS	LS	\$34,970.00	LS	\$6,800.00	LS	\$25,300.00
6.5	Baffles - Ash Monofill Basin 1 and 3	1	LS	LS	\$21,600.00	LS	\$9,400.00	LS	\$5,800.00
6.6	Precast Concrete Drop Inlets (DI-11A, DI-11B, & DI-31)	3	EA	LS	\$21,750.00	LS	\$15,000.00	LS	\$15,240.00
6.7	24" Diam. RCP (Class III) (C-31) (includes 1 FES)	68	LF	\$129.00	\$8,772.00	\$387.00	\$26,300.00	\$69.00	\$4,692.00
6.8	36" Diam. RCP (Class III) (C-12)	8	LF	\$532.00	\$4,256.00	\$8,000.00	\$64,000.00	\$105.00	\$840.00
6.9	48" Diam. RCP (Class III) (C-11) (includes 1 FES)	80	LF	\$268.00	\$21,440.00	\$400.00	\$32,000.00	\$176.00	\$14,080.00
6.10	Rip Rap Aprons (C-31, Ash Basin 1, & Down Pipes (4))	6	EA	LS	\$15,996.00	LS	\$29,000.00	LS	\$9,450.00
6.11	Drainage Channel DC-11	230	LF	\$76.00	\$17,480.00	\$35.00	\$8,050.00	\$155.10	\$35,673.00
6.12	Drainage Channel DC-12	140	LF	\$24.10	\$3,374.00	\$35.00	\$4,900.00	\$8.65	\$1,211.00
6.13	Drainage Channel DC-13	100	LF	\$59.40	\$5,940.00	\$35.00	\$3,500.00	\$149.00	\$14,900.00
6.14	Drainage Channel DC-31	270	LF	\$21.30	\$5,751.00	\$35.00	\$9,450.00	\$9.90	\$2,673.00
6.15	Drainage Channel DC-32	370	LF	\$22.80	\$8,436.00	\$35.00	\$12,950.00	\$9.70	\$3,589.00
6.16	Erosion Control Blanket	8,000	SY	\$2.70	\$21,600.00	\$3.76	\$30,100.00	\$1.40	\$11,200.00
6.17	Revegetation	35	AC	\$3,510.00	\$122,850.00	\$6,050.00	\$211,750.00	\$2,705.00	\$94,675.00
7.0	Cleanout of Ash Monofill Internal Stormwater Basin	500	CY	\$22.41	\$11,205.00	\$30.00	\$15,000.00	\$18.15	\$9,075.00
8.0	Surveying Control	1	LS	LS	\$60,800.00	LS	\$78,750.00	LS	\$10,800.00
9.0	Bonds, Mobilization, & Insurance (4% of Total Bid Price (Schedule A)) =	1	LS	LS	\$112,600.00	LS	\$35,000.00	LS	\$151,400.00
TOTAL BASE BID PRICE - SCHEDULE A:					\$2,934,754.50	\$3,531,390.00		\$3,821,830.00	



BIDDER:				T & K Construction, LLC		M.J. Price Construction Co., Inc.		Rightmyer Machine Rentals	
BASE BID SCHEDULE B: AREA 1 C&D LANDFILL CLOSURE									
1.0	Site Preparation:	1	LS	LS	\$143,800.00	LS	\$85,000.00	LS	\$155,000.00
1.1	Abandon Piezometers Completed in Soil	382	VF	\$63.61	\$24,299.02	\$100.00	\$38,200.00	\$379.00	\$144,778.00
2.0	Excavation:	----	----	----	----	----	----	----	----
2.1	Overexcavation & Backfill - Soil	50	CY	\$9.86	\$493.00	\$45.00	\$2,250.00	\$21.50	\$1,075.00
3.0	Embankment:	----	----	----	----	----	----	----	----
3.1	Structural Fill - Borrow Area No. 2	9,900	CY	LS	\$30,500.00	LS	\$49,500.00	LS	\$91,600.00
3.2	Miscellaneous Additional Embankment	2,000	CY	\$3.38	\$6,760.00	\$12.00	\$24,000.00	\$8.00	\$16,000.00
4.0	LFG Vents	6	EA	\$4,140.00	\$24,840.00	\$330.00	\$1,980.00	\$1,500.00	\$9,000.00
5.0	Final Cover System (Type 1 & 2):	----	----	----	----	----	----	----	----
5.1	Cap Diversion Berm	1,160	LF	LS	\$13,900.00	LS	\$15,200.00	LS	\$15,570.00
5.2	40 mil Text. LLDPE Geomembrane	46,000	SF	LS	\$46,000.00	LS	\$76,900.00	LS	\$95,145.00
5.3	Drainage Geocomposite	46,000	SF	LS	\$50,800.00	LS	\$85,000.00	LS	\$90,800.00
5.4	Drains (Drainage Geocomposite)	1050	LF	LS	\$31,700.00	LS	\$21,000.00	LS	\$39,200.00
5.5A	Vegetative Soil Layer - Side Slopes (1.5' Avg.)	13,100	CY	LS	\$59,400.00	LS	\$157,200.00	LS	\$127,600.00
5.5B	Vegetative Soil Layer - Top Slopes (2.0' Min.)	3,800	CY	LS	\$15,000.00	LS	\$45,600.00	LS	\$36,100.00
5.6	Down Pipes DP-1 & DP-2 (18" CPE (Type S) Pipe & Fittings)	680	LF	LS	\$29,200.00	LS	\$35,000.00	LS	\$27,800.00
5.7	Down Pipe DP-3 (24" CPE (Type S) Pipe & Fittings)	160	LF	LS	\$10,100.00	LS	\$20,000.00	LS	\$8,315.00
6.0	Erosion and Sedimentation Control:	----	----	----	----	----	----	----	----
6.1	Temporary Gravel Construction Entrance/Exit	1	EA	\$12,893.00	\$12,893.00	\$7,500.00	\$7,500.00	\$3,050.00	\$3,050.00
6.2	Silt Fence	1,400	LF	\$5.21	\$7,294.00	\$3.00	\$4,200.00	\$4.50	\$6,300.00
6.3	Stone Filter Fence	100	LF	\$10.13	\$1,013.00	\$11.80	\$1,180.00	\$9.30	\$930.00
6.4	Basin A2-1	1	LS	LS	\$57,800.00	LS	\$90,000.00	LS	\$21,215.00
6.5	Rock Dam	1	LS	LS	\$4,300.00	LS	\$16,000.00	LS	\$11,200.00
6.6	Level Spreader	1	LS	LS	\$6,400.00	LS	\$6,000.00	LS	\$2,300.00
6.7	24" Diam. CPE (Type S) Pipe (C-A) (includes 2 FES)	96	LF	\$132.19	\$12,690.24	\$145.00	\$13,900.00	\$58.00	\$5,568.00
6.8	Filter Berm	1	EA	LS	\$6,200.00	LS	\$30,000.00	LS	\$4,230.00
6.9	Rip Rap Aprons (Down Pipes (3), Basin A2-1, C-A)	5	EA	LS	\$11,600.00	LS	\$25,000.00	LS	\$8,265.00
6.10	Drainage Channel DC-12A	280	LF	\$8.92	\$2,497.60	\$35.00	\$9,800.00	\$4.60	\$1,288.00
6.11	Drainage Channel DC-12B	630	LF	\$22.93	\$14,445.90	\$35.00	\$22,050.00	\$8.60	\$5,418.00
6.12	Drainage Channel DC-21	360	LF	\$24.00	\$8,640.00	\$35.00	\$12,600.00	\$10.00	\$3,600.00
6.13	Erosion Control Blanket	3000	SY	\$2.25	\$6,750.00	\$6.50	\$19,500.00	\$1.40	\$4,200.00
6.14	Revegetation	17	AC	\$3,652.94	\$62,099.98	\$9,000.00	\$153,000.00	\$2,705.00	\$45,985.00
7.0	LFG Vent Trench	250	LF	LS	\$68,850.00	LS	\$12,600.00	LS	\$52,000.00
8.0	Surveying Control	1	LS	LS	\$33,800.00	LS	\$52,500.00	LS	\$4,200.00
9.0	Bonds, Mobilization & Insurance (4% of Total Bid Price (Schedule B)) =	1	LS	LS	\$32,900.00	LS	\$11,300.00	LS	\$40,000.00
TOTAL BASE BID PRICE - SCHEDULE B:				\$836,965.74		\$1,143,960.00		\$1,077,732.00	
TOTAL BASE BID PRICE (SCHEDULES A & B):				\$3,771,720.24		\$4,675,350.00		\$4,899,562.00	
IRREGULARITIES:				Calculated Schedule A Total is \$10,410 Less than Written Total. No Bid Provided for Item 3.2 in Sch A (Assumed to be \$0).		No Qualifications Provided.		NONE	

CERTIFICATION: This is certified to be an accurate tabulation of bids received for the project.  
SMITH GARDNER, INC.

DocuSigned by:  
  
5B6B31996A674D7...  
9/24/2018



Pieter K. Scheer, P.E.  
Project Manager



**AGENDA**  
**Halifax County Board of Commissioners**  
**Regular Meeting**

**TO:** Halifax County Board of Commissioners

**FROM:** Vernon J. Bryant, Chairman

**PRESENTER:** Vernon J. Bryant, Chairman

**SUBJECT:** Resolution Honoring Centenarian Easter Milton Pearson Johnson

**DATE:** October 15, 2018 Regular Meeting

---

**SUPPORTING INFORMATION:**

Attached, please find a resolution honoring centenarian Easter Milton Pearson Johnson.

**ATTACHMENTS:**

Description

- ▢ Resolution Honoring Centenarian Easter Milton Pearson Johnson

---

**TOTAL COST:**

**COUNTY COST:**

---

**REQUEST:** Adopt the resolution honoring centenarian Easter Milton Pearson Johnson.



*Resolution*  
*in Honor of Halifax County Centenarian*  
*Easter Milton Pearson Johnson*

*Whereas*, Easter Milton Pearson Johnson was born on November 15, 1918; and

*Whereas*, a centenarian is a person who lives to or beyond the age of 100 years; and

*Whereas*, longevity of life is a blessing for an individual and for a community which benefits from the knowledge, creativity, and experiences of older individuals; and

*Whereas*, senior citizens bring a wealth of experience and knowledge to the increasingly active roles they play in today's society; their past contributions and future participation are a vital part of, and valuable asset to, the fabric of community life and activity; and

*Whereas*, Halifax County recognizes the contributions of senior citizens to our community and the important role they serve in our society; and

*Whereas*, Halifax County senior citizens have earned the respect and admiration of all the citizens of the County for their knowledge, wisdom, and community spirit and for how they enrich the lives of those around them through their joyous and sincere love for others and through their quiescent charm and wisdom which comes only from a fullness of years.

*Now, Therefore, Be It Resolved*, that the Halifax County Board of Commissioners publicly recognizes those who have reached such a remarkable age and who have witnessed and celebrated the innovations, cultural developments, and awesome achievements of this country during the last century, while themselves contributing to the growth and excellence of this great Nation, State, and County and does hereby deem it an honor and a pleasure to extend to centenarians in Halifax County sincere congratulations and best wishes for many more happy and productive years.

This the 15<sup>th</sup> day of October, 2018.

---

Vernon J. Bryant, Chairman  
Halifax County Board of Commissioners

---

Andrea H. Wiggins, MMC, Clerk to the Board  
Halifax County Board of Commissioners



**AGENDA**  
**Halifax County Board of Commissioners**  
**Regular Meeting**

**TO:** Halifax County Board of Commissioners

**FROM:** Vernon J. Bryant, Chairman

**PRESENTER:** Vernon J. Bryant, Chairman

**SUBJECT:** Pearlie B. Bellamy Special Recognition

**DATE:** October 15, 2018 Regular Meeting

---

**SUPPORTING INFORMATION:**

Attached, please find a congratulatory letter honoring Pearlie B. Bellamy, 95 years old, for your review and approval.

**ATTACHMENTS:**

Description

- ▯ Pearlie B. Bellamy - Congratulatory Letter

---

**TOTAL COST:**

**COUNTY COST:**

---

**REQUEST:** Approve the congratulatory letter honoring Pearlie B. Bellamy, 95 years old.

# Halifax County Board of Commissioners

Vernon J. Bryant, Chairman  
J. Rives Manning, Jr., Vice-Chairman  
Carolyn C. Johnson  
Rachel K. Hux  
Marcelle O. Smith  
T. Patrick W. Qualls



Tony N. Brown  
County Manager  
Andrea H. Wiggins  
Clerk to the Board  
M. Glynn Rollins, Jr.  
County Attorney

Halifax County Historic Courthouse  
10 North King Street, Post Office Box 38, Halifax, North Carolina 27839  
252-583-1131 · Fax: 252-583-9921  
[www.halifaxnc.com](http://www.halifaxnc.com)

October 5, 2018

Ms. Pearlie B. Bellamy  
7021 Dayton Ridge Drive  
Apex, North Carolina 27539

Dear Ms. Bellamy:

On behalf of the Halifax County Board of Commissioners, I would like to honor and recognize Pearlie Bryant Bellamy who has reached the remarkable age of 95 years old.

Pearlie Bryant was born at home with the help of a local midwife on June 8, 1923 in Halifax County, North Carolina, to her father Benjamin "Bennie", 27 years old, and mother Mattie, 23 years old. She was officially unnamed as the midwife did not record her name in county records. Pearlie was the Bryant's third child and first daughter. The family worshipped at First Baptist Church with the Hewlins and Saints Chapel where Pearlie confessed the Lord in a summer bible school. She attended numerous schools in the area, including Allen Grove School where she learned to dance the Charleston and enjoyed playing recreational sports such as baseball and basketball with her six brothers and two sisters. The Bryant family farm remained on Route 561 for several decades. At 16, Pearlie married Chester Bellamy on January 21, 1940, in Emporia, Virginia, and had one daughter, Phyllis Marie.

In 1941, the Bellamys moved to Newport News, Virginia, where Chester worked in the shipyard and Pearlie held various positions. They purchased a home and raised their daughter. The Bellamys helped many of their family members to establish their lives in the Hampton Roads and New Jersey areas. Pearlie returned to Halifax County to work the tobacco fields with her father every chance she could. She also cared for her mother during her ailing years with the support of local relatives such as Jean Wilkins. At 95 years of age, Pearlie continues to maintain the Bellamy home and frequently visits Phyllis in Wake County. She visits family and friends in Halifax County, as often as possible.

On behalf of the Halifax County Board of Commissioners, it is an honor and a pleasure to extend to Pearlie Bryant Bellamy our sincere congratulations and best wishes for many more happy years.

With kindest regards, I am

Sincerely,

Vernon J. Bryant, Chairman  
Halifax County Board of Commissioners

The mission of the Halifax County Board of Commissioners is to provide leadership and support for an effective county government that seeks to enhance the quality of life for the people of Halifax County.

**In God We Trust**